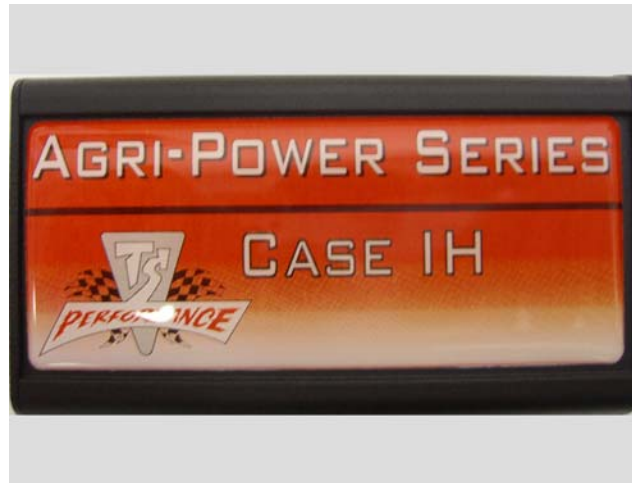




# **TS PERFORMANCE**

## **WE ARE DIESEL**

### TS Performance



## **Agripower**

### **8.3L & 9.0L Common Rail**

#### **Case IH**

#### **TSP02CIH**

**Thank you for buying the MP-8. Here you will learn how to install this MP-8 into your truck, and we guarantee that you will be satisfied with our product. Before you get started check to make sure that you have everything below in the contents that came in the box**

### **Installation Manual**

<b><u>Contents:</u></b>	
MP-8 Module	Harness
TSP003 – 3 position switch	(4) Zip Ties

- HP increase of 30%
- Decrease Fuel Consumption by up to 15%
- On-The-Fly Adjustable
- When removed leaves no trace of modification or foot prints

*Continued*

**Power increases as you turn the switch clockwise 0-30% over stock**

**Switch position as follows:**

**1<sup>st</sup> – stock**

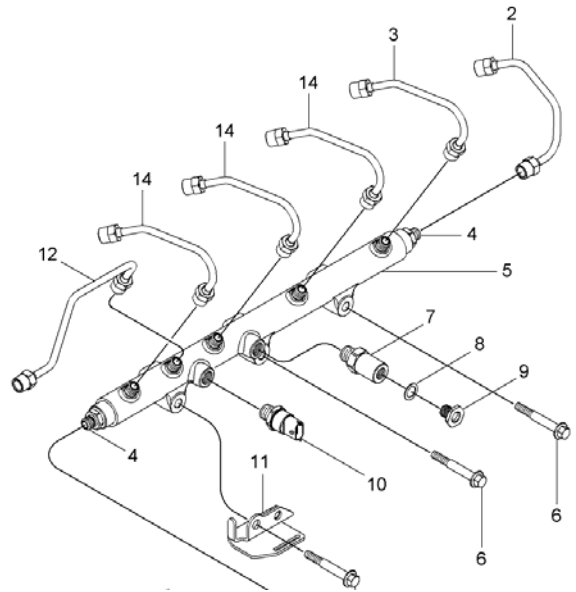
**2<sup>nd</sup> – 15%**

**3<sup>rd</sup> – 30%**

### **Instructions for installation**

**Place Di-Electric Grease onto every electrical connection.**

1. Locate the fuel injection rail. It will be located on the side of the engine with six steel lines that run to the injectors.
2. Now locate the fuel pressure sensor. This will be found on the rail and will be the only connector that looks the same as the MP-8 harness. Identified as #10 on the image to the right.
3. Unplug the sensor; plug the connector from the MP8 harness in to the sensor.
4. Now plug the factory sensor in to the left over connector.
5. The MP8 comes with two 14" zip ties to secure the box.
6. Route the cables away from any moving parts or places that might damage the cable with the 4" zip ties supplied and mount the box in a dry cool place.
7. The switch may be mounted in the cab or under the hood.



**DO NOT unplug the MP8 Module while the engine is running. This may result in engine or component failure and may void warranty on the engine or MP8 unit.**

**If you have any questions contact TS Performance @ 270-746-9999**



Continued



TS Performance  
5425 Nashville Rd  
Bowling Green, KY 42101  
270-746-9999  
[www.tsperformance.com](http://www.tsperformance.com)

### **READ CAREFULLY BEFORE INSTALLING ANY TS PERFORMANCE PRODUCT**

**REMEMBER THIS IS A HIGH PERFORMANCE PRODUCT. USE AT YOUR OWN RISK. FOR OFF ROAD USE ONLY.**

**Do not use this product until you have carefully read the following agreement.** This agreement sets forth the terms and conditions for the use of the TS Performance product. The installation of this product indicates that the buyer has read and fully understands this agreement and accepts its terms and conditions.

#### DISCLAIMER OF LIABILITY

TS Performance, its distributors or dealers shall in no way be responsible for the product's proper use and service. The buyer of this system hereby waives all liability claims. The buyer acknowledges that he is not relying on the seller's skill or judgment to select or furnish goods suitable for any particular purpose and that there are no liabilities which extend beyond the description on the face hereof, and the buyer hereby waives all remedies or liabilities, expressed or implied arising by law or otherwise, (including without obligations of the seller with respect to fitness, merchantability and consequential damages) or whether or not occasioned by the seller's negligence.

The seller disclaims any warranty and expressly disclaims any liability for personal injury or damages. The buyer acknowledges and agrees that the disclaimer of any liability for personal injury is a material term for this agreement and the buyer agrees to indemnify the seller and to hold the seller harmless from any claim related to the item of the equipment purchased. Under no circumstances will the seller be liable for any damages or expenses by reason of use or sales of any such equipment.

The seller assumes no liability regarding the improper installation or misapplication of its products. It is the installer's responsibility to check for proper installation and if in doubt the manufacturer is to be contacted.

#### LIMITED LIFETIME WARRANTY

##### **STATEMENT POLICY**

- The warranty policy is the best warranty within the high performance diesel industry.
- All **TS Performance** products have been inspected, tested and trial in the factory laboratories and on the field.
- Nothing in this Statement of Policy shall alter or enlarge the terms of warranties, obligation or liabilities of these products.
- **TS Performance** is not responsible or liable for any products damaged or destroyed due to improper installation.

##### **TERMS OF WARRANTY**

- The defective product must be freight prepaid and returned to **TS Performance** for further investigation, otherwise this warranty shall be deemed null and voided and of no effect.
- This warranty is void on any products that show evidence of misapplication, negligence, improper installation, and abuse, lack of proper maintenance or alternation from its original design.
- In no event will **TS Performance** be liable for any consequential or incidental damages for breach of any express or implied warranty on the product.
- This warranty is not transferable or assignable.
- **TS Performance** is not responsible or liable for any products damaged or destroyed due to improper installation
- **.IN THE EVENT THAT THE BUYER DOES NOT AGREE WITH THIS AGREEMENT: THE BUYER MAY PROMPTLY RETURN THIS PRODUCT IN A NEW ANDN UNUSED CONDITION WITH A DATED PROOF OF PURCHASE TO THE PLACE OF PURCHASE WITHIN TEN (10) DAYS FROM DATE OF PURCHASE FOR A FULL REFUND.**

*Continued*

**TS PERFORMANCE**  
**Products and Other Info found on the**  
**[WWW.TSPERFORMANCE.COM](http://WWW.TSPERFORMANCE.COM)**

**FOR TECHNICAL SUPPORT**  
**(270) 746-9999**



***WE ARE DIESEL***